



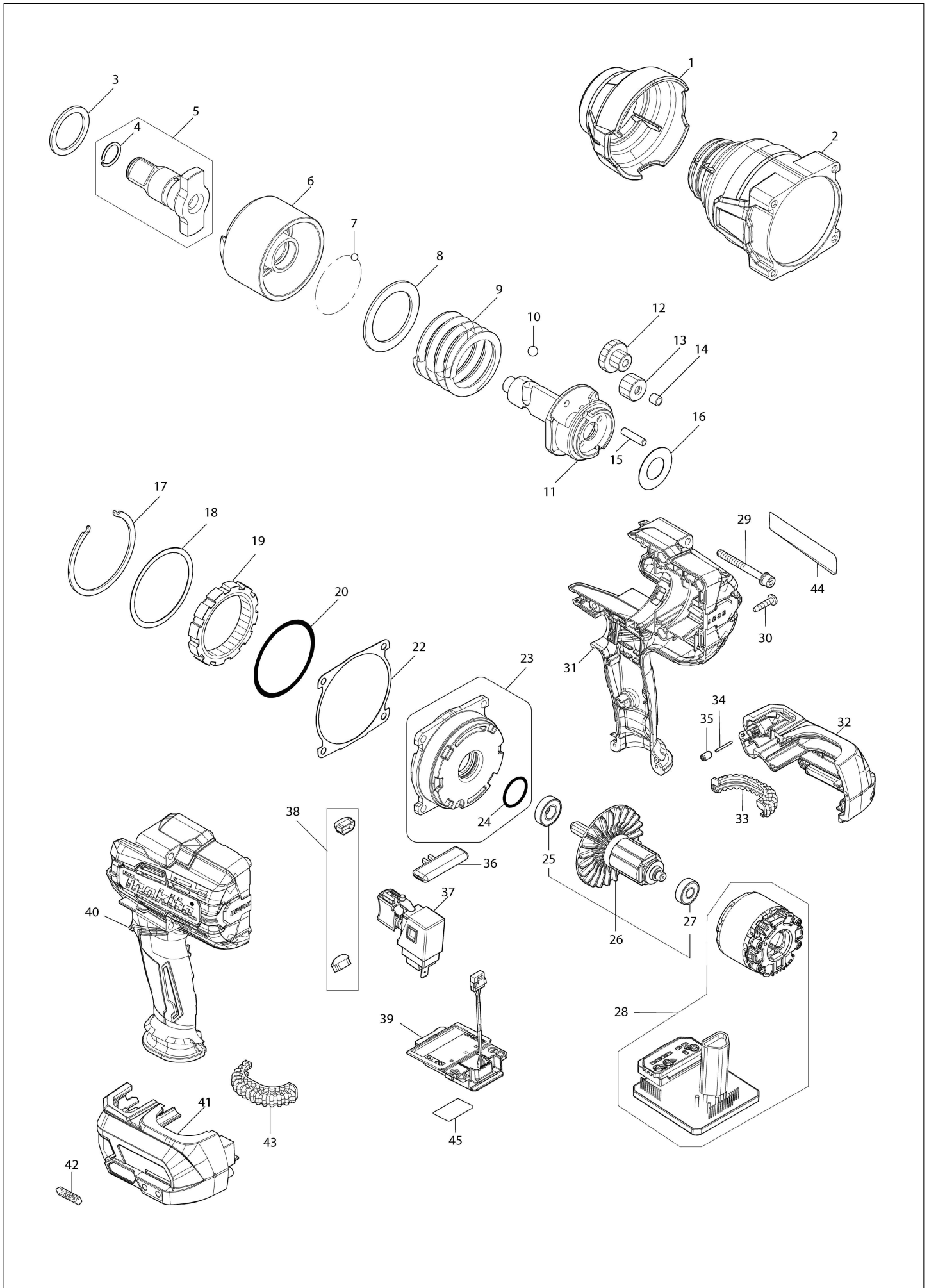
Diagram / Parts List

GWT01

Cordless Impact Wrench



(US) GWT01 / Cordless Impact Wrench



US	UNITED STATES
-----------	----------------------

GWT01 / Cordless Impact Wrench

Item	Sub	Parts No.	Parts Description	Qty	I/C	E/C No.	Close No.	Remark
001		422594-9	Bumper	1				
002		140U80-1	Hammer case complete	1				
	C10	8013D8-1	Caution label	1				
003		267250-2	Flat washer 30	1				
004		232334-5	Ring spring 16	1				
005		136249-7	Anvil E assembly	1				
	D10		INC. 4					
006		327595-1	Hammer	1				
007		216002-8	Steel ball 4.8	30				
008		253478-8	Flat washer 41	1				
009		232623-8	Compression spring 41	1				
010		216009-4	Steel ball 7.1	2				
011		327594-3	Spindle	1				
012		226990-1	Spur gear 11-22	2				
013		226989-6	Spur gear 15	2			DA671	
013-1		227935-2	Spur gear 15	2	S	DA671		
014		257539-6	Sleeve 5	2			DA671	
015		268238-5	Pin 5	4				
016		267235-8	Flat washer 18	1				
017		346947-7	Retainer	1				
018		253479-6	Flat washer 57	1			DY082	
019		226991-9	Internal gear 50	1				
020		213663-5	O-ring 55	1				
022		422595-7	Gasket	1				
023		136279-8	Internal gear case assembly	1			DY082	
	D10		INC. 24				DY082	
023-1		137326-8	Internal gear case assembly	1	S	DY082		
	D10		INC. 24			DY082		
024		213961-7	O-ring 22	1				
025		210069-8	Ball bearing 6900DDW	1				
026		519630-1	Rotor assembly	1			DV256	
	D10		INC. 25,27				DV256	
026-1		510604-5	Rotor assembly	1	O	DV256		
	D10		INC. 25,27			DV256		
027		211022-7	Ball bearing 607ZZ	1			DV256	
027-1		210169-4	Ball bearing 607LLB	1	O	DV256		
028		629A16-8	Stator unit	1			E3106	
	C10	8012S9-8	Switch label	1			E3106	
028-1		629D74-2	Stator unit	1	S	E3106		
	C10	8012S9-8	Switch label	1		E3106		
029		265B38-6	Hex. socket head bolt M5X50 WRM	4				
030		266326-2	Binding head tapping screw 4X18	9			D7021	
030-1		265A48-7	Tapping screw 4X18	9	O	D7021		
031		183P61-2	Housing set	1			DD660	
	D10		INC. 40				DD660	
031-1		183V83-8	Housing set	1	<	DD660	DR830	
	D10		INC. 40			DD660	DR830	
031-2		1830R8-6	Housing set	1	<	DR830		
	D10		INC. 40			DR830		
032		183P62-0	Battery housing set	1			N14628	
	C10	263005-3	Rubber pin 6	2			N14628	
	C20	252126-6	Hex. lock nut M4-7	4			N14628	
	D10		INC. 41				N14628	
032-1		183S33-5	Battery housing set	1	S	N14628		
	C10	263005-3	Rubber pin 6	2		N14628		
	C20	252126-6	Hex. lock nut M4-7	4		N14628		
	D10		INC. 41			N14628		
033		424773-5	Cushion rubber	1			DC149	
033-1		422810-9	Cushion rubber	1	<	DC149	DK168	
033-2		422A55-5	Cushion rubber	1	<	DK168		
034		268284-8	Pin 1.5	1			D4478	
035		263036-2	Rubber pin 5	1			D4478	
036		456268-0	F/R change lever	1				
037		140U03-9	Switch complete	1			E3106	
	C10	424774-3	Switch cover	1			E3106	

B:GWT01D(L)

Interchange

O: Yes

X: No

<: the new part can be substituted for the current.

>: the current part can be substituted for the new.

S: Interchangeable as a set.

